

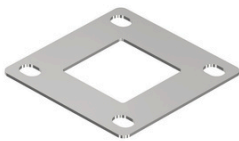


INSTALLATION GUIDE

Stainless Steel Spigot

What's included?

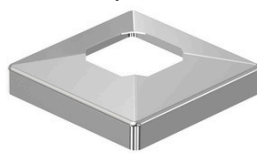
1x
Leveling plate



1x
Spigot



1x
Base plate cover



1x
Pressure plate



Black shims
(optional)



What you'll need to get started (not included):

Appropriate
fasteners



Drill 19mm (3/4")



Pencil

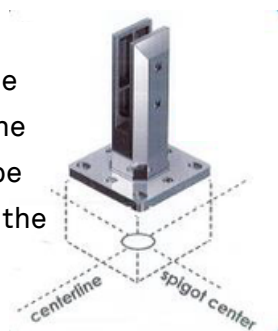


Important information:

It is the responsibility of the installer to meet all code and safety requirements, and to obtain all required building permits. The railing installer is responsible to determine and implement appropriate installation techniques for each installation situation including but not limited to appropriate fasteners. VISTA Railing Systems, its distributors and dealers shall not be held liable for improper or unsafe installations. Posts and/or spigots must always be secured to the sub-structure and should never attach to only the surface material (i.e. deck board). Failure to follow these instructions may result in serious injury or death.

1

Mark out the center line for the entire railing, then mark out the glass panels, with spigots to be positioned 20 percent in from the edge of the glass panels.

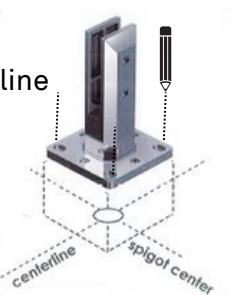


NOTE: If installing LED Lights, drill 19mm (3/4") hole in the center mark. This hole will be used to feed through the LED light.



2

Align your spigot to the center line and mark all holes in the base plate.



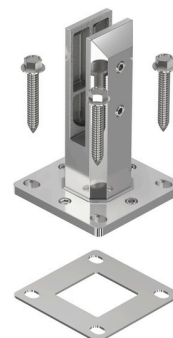
3

Drill pilot hole to the size suited to the fasteners you are using to fasten the spigots to the structure.



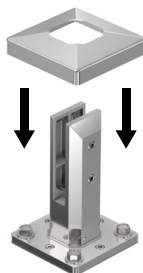
4

Fasten spigot to structure with appropriate fasteners (not included). The required fastener will depend on sub-structure. Always secure to the sub-structure and should never attach to only the surface material (i.e. deck board)



5

Slide base plate cover (included) over spigot. NOTE: when installing in coastal applications, regular cleaning of the saltwater film is required (Stainless, like the glass panels, needs to be maintained by regular cleaning. Cleaning the spigots can be accomplished with a green scotchbrite pad – scrubbed with the grain of the stainless steel. After cleaning, applying of a stainless-steel polish or protectant).



NOTE: If you're installing LED lights, please skip the glass gasket and refer to the LED Light Installation Guide for the next steps. If you're not using LED lights, simply slide the glass gasket back into place.

