



**RECOMMENDED MOUNTING AND
FASTENING GUIDE FOR
RESIDENTIAL SINGLE DWELLING
UNIT DECK GUARDRAIL
SYSTEMS**

Vista Railing Systems Inc
Head Office: 23282 River Rd, Maple Ridge, BC V2W 1B6
Phone: 800-667-8247 **Email:** sales@vistarailings.com
www.vistarailings.com

ANCHORAGE

Proper anchorage of guardrails posts and rails to a sound and structurally adequate supporting structure is essential for a guardrail system. These elements must be as secure and as rigid as possible. A structurally adequate supporting structure is as important as the anchorage elements themselves. One without the other compromises the load carrying capacity and performance of the guardrail system. The responsibility to provide structurally adequate support conditions is beyond the scope and control of the guardrail system designer and/or manufacturer/provider.

IMPORTANT

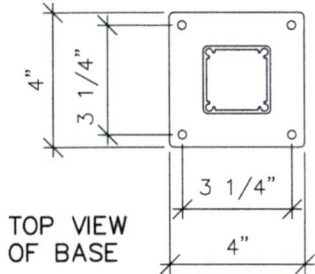
Proper layout, design, and installation of a deck railing are critical to the performance and strength of the deck railing. Failure to comply with proper layout, design, and installation of a deck railing could result in serious injury or loss of life. This document is intended as a guide only, for designers, architects, engineers, and professional installers. If additional clarification is required, please consult a professional engineer to evaluate your specific circumstances, prior to starting your residential single dwelling unit deck guardrail system or project.

READ ALL INSTRUCTIONS COMPLETELY BEFORE STARTING INSTALLATION

It is the responsibility of the installer to meet all code and safety requirements, and to obtain all required building permits. The railing installer should determine and implement appropriate installation techniques for each installation situation. VISTA Railing Systems Inc., its distributors, and dealers shall not be held liable for improper or unsafe installations. VISTA Railing Systems posts must always be secured to the substructure and should never be attached to only the surface material (ie deck board). Failure to follow all of these instructions could result in serious injury or death.

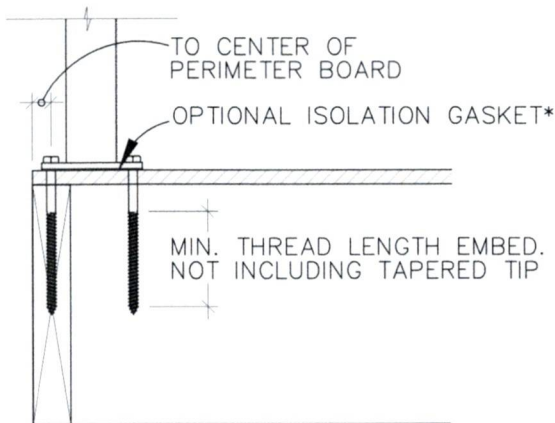
RECOMMENDED MOUNTING AND FASTENING TO WOOD

NO.1/NO.2 OR BETTER WOOD BLOCKING ANCHORAGE TO MAIN STRUCTURE AND MAIN STRUCTURE LOAD CAPACITY RESPONSIBILITY OF OTHERS



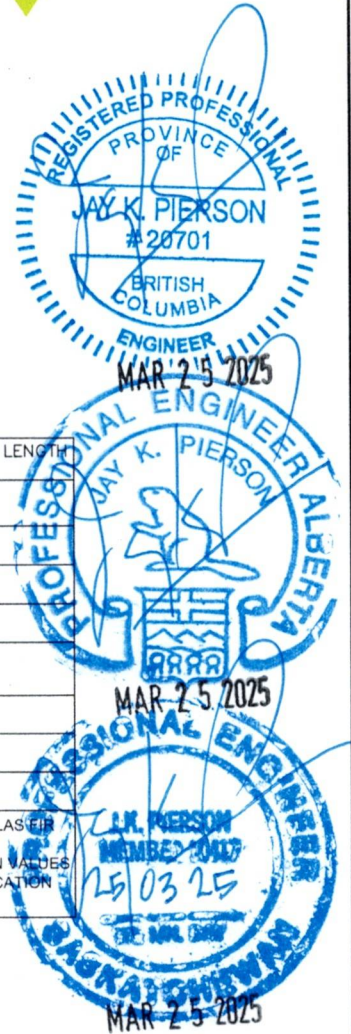
TOP VIEW OF BASE

*OPTIONAL CLOSED CELL ISOLATION GASKET BETWEEN DISSIMILAR OR INCOMPATIBLE MATERIALS. (NOT INTENDED AS A WATER PROOFING ITEM)



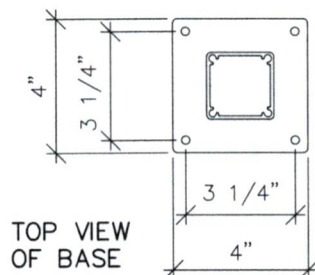
POST SIZE	LAG SCREW DIAMETER	WOOD BLOCKING SPECIES	MIN THREAD LENGTH EMBEDMENT
2"	5/16"	DOUGLAS FIR	3"
		SPRUCE-PINE-FIR	3 3/4"
	3/8"	DOUGLAS FIR	2 1/2"
		SPRUCE-PINE-FIR	3 1/4"
2 1/2"	5/16"	DOUGLAS FIR	4"
		SPRUCE-PINE-FIR	5"
	3/8"	DOUGLAS FIR	3 1/2"
		SPRUCE-PINE-FIR	4 1/2"

ALL LAGS SCREWS TO BE SET IN No.1/No.2 OR BETTER DOUGLAS FIR OR SPRUCE-PINE-FIR WOOD BLOCKING. MINIMUM THREAD LENGTH EMBEDMENT BASED UPON DESIGN VALUES AND METHODS SPECIFIED IN THE NATIONAL DESIGN SPECIFICATION FOR WOOD CONSTRUCTION 2018 EDITION



RECOMMENDED MOUNTING AND FASTENING TO CONCRETE

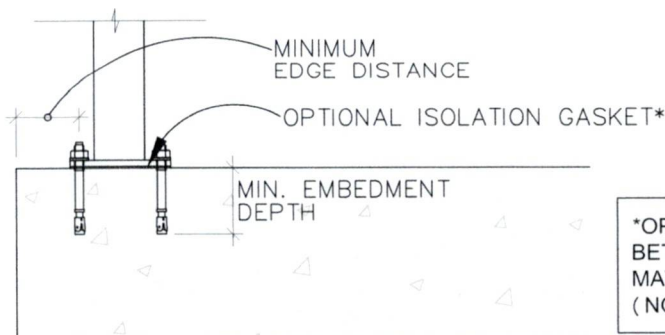
MAIN STRUCTURE LOAD CAPACITY RESPONSIBILITY OF OTHERS



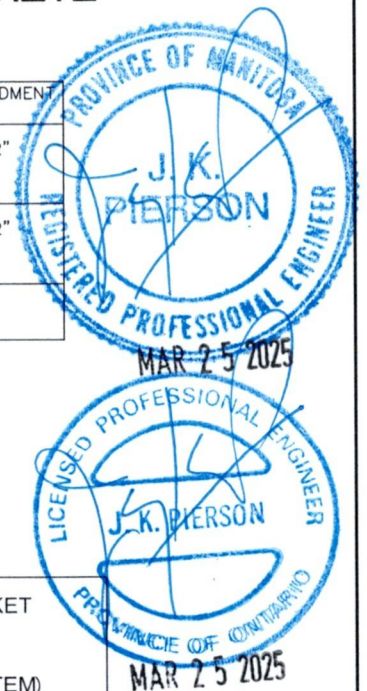
TOP VIEW OF BASE

POST SIZE	MIN. CONCRETE COMPRESSIVE STRENGTH	FASTENER TYPE	MIN. EDGE DISTANCE	MIN. EMBEDMENT DEPTH
2"	4000 psi (27.6 MPa)	3/8"φ HILTI KWIK BOLT 3 WEDGE ANCHOR	2 1/2"	3 1/2"
2 1/2"	4000 psi (27.6 MPa)	3/8"φ HILTI KWIK BOLT 3 WEDGE ANCHOR	4"	3 1/2"

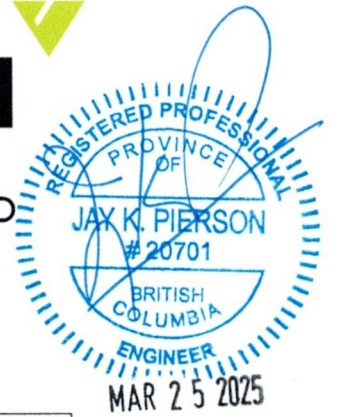
CONCRETE ANCHORS WITH EQUIVALENT OR BETTER ALLOWABLE TENSION AND SHEAR LOAD CAPACITY CAN BE SUBSTITUTED.



*OPTIONAL CLOSED CELL ISOLATION GASKET BETWEEN DISSIMILAR OR INCOMPATIBLE MATERIALS. (NOT INTENDED AS A WATER PROOFING ITEM)



RECOMMENDED GUARDRAIL POST MOUNTING CONFIGURATIONS



FASCIA (SIDE) MOUNTING DETAILS
RECOMMENDED MOUNTING AND FASTENING TO WOOD

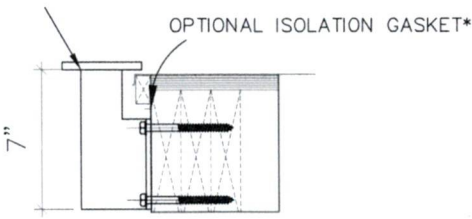
NO. 1/NO. 2 OR BETTER WOOD BLOCKING ANCHORAGE TO MAIN STRUCTURE AND MAIN STRUCTURE LOAD CAPACITY RESPONSIBILITY OF OTHERS



FRONT VIEW OF VISTA RAILING FASCIA BRACKET

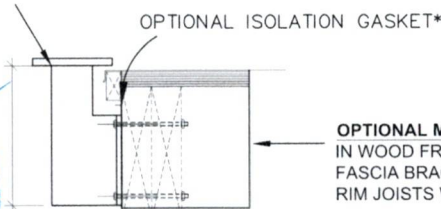
*OPTIONAL CLOSED CELL ISOLATION GASKET BETWEEN DISSIMILAR OR INCOMPATIBLE MATERIALS. (NOT INTENDED AS A WATER PROOFING ITEM)

MOUNTING METHOD:
 Ensure the top of the Vista Railing Fascia Bracket is 1/4" above the top of the deck surface so that railing height is maintained.



MIN. THREAD LENGTH EMBEDMENT NOT INCLUDING TAPERED TIP

MOUNTING METHOD:
 Ensure the top of the Vista Railing Fascia Bracket is 1/4" above the top of the deck surface so that railing height is maintained.



OPTIONAL MOUNTING METHOD:
 IN WOOD FRAMING APPLICATIONS BWC SLIM LINE FASCIA BRACKET MAY ALSO BE ATTACHED TO THE RIM JOISTS WITH THRU BOLTS AS INDICATED.

POST SIZE	LAG SCREW DIAMETER	WOOD BLOCKING SPECIES	MIN THREAD LENGTH EMBEDMENT
2"	5/16"	DOUGLAS FIR	3 1/4"
		SPRUCE-PINE-FIR	4"
	3/8"	DOUGLAS FIR	2 3/4"
		SPRUCE-PINE-FIR	3 1/2"
2 1/2"	5/16"	DOUGLAS FIR	4 1/4"
		SPRUCE-PINE-FIR	5 1/2"
	3/8"	DOUGLAS FIR	3 3/4"
		SPRUCE-PINE-FIR	4 3/4"

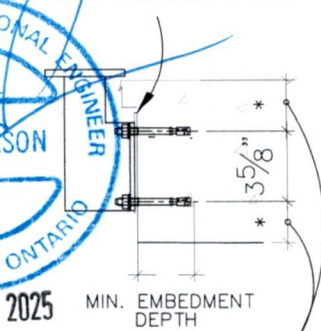
ALL LAGS SCREWS TO BE SET IN No. 1/No. 2 OR BETTER DOUGLAS FIR OR SPRUCE-PINE-FIR WOOD BLOCKING MINIMUM THREAD LENGTH EMBEDMENT BASED UPON DESIGN VALUES AND METHODS SPECIFIED IN THE NATIONAL DESIGN SPECIFICATION FOR WOOD CONSTRUCTION 2018 EDITION



FASCIA (SIDE) MOUNTING DETAILS
RECOMMENDED MOUNTING AND FASTENING TO CONCRETE

MAIN STRUCTURE LOAD CAPACITY RESPONSIBILITY OF OTHERS

OPTIONAL ISOLATION GASKET*



POST SIZE	MIN. CONCRETE COMPRESSIVE STRENGTH	FASTENER TYPE	MIN. EDGE DISTANCE	MIN. EMBEDMENT DEPTH
2"	4000 psi (27.6 MPa)	3/8"Ø HILTI KWIK BOLT 3 WEDGE ANCHOR	4 1/2"	3 1/2"
2 1/2"	4000 psi (27.6 MPa)	3/8"Ø HILTI KWIK BOLT 3 WEDGE ANCHOR	4 1/2"	3 1/2"

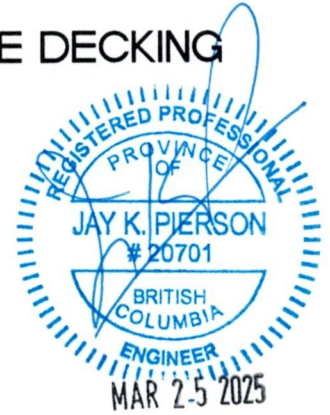
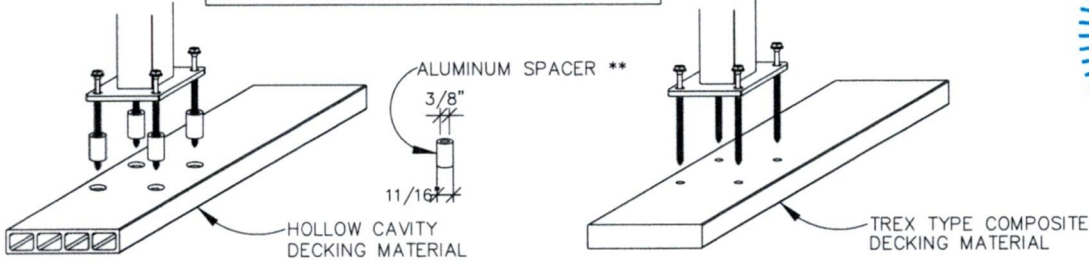
CONCRETE ANCHORS WITH EQUIVALENT OR BETTER ALLOWABLE TENSION AND SHEAR LOAD CAPACITY CAN BE SUBSTITUTED.

*OPTIONAL CLOSED CELL ISOLATION GASKET BETWEEN DISSIMILAR OR INCOMPATIBLE MATERIALS. (NOT INTENDED AS A WATER PROOFING ITEM)

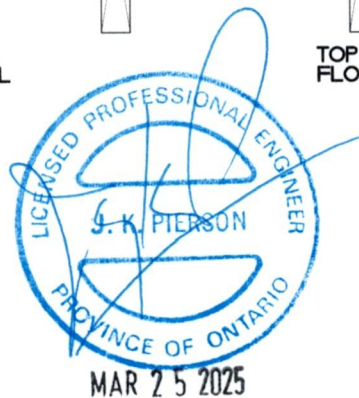
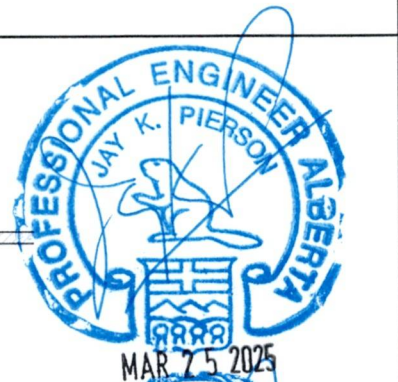
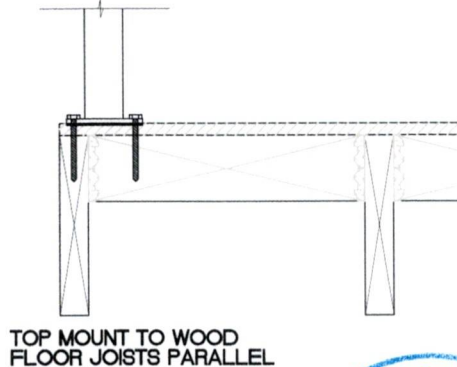
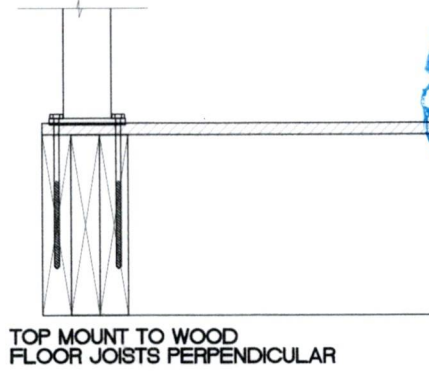
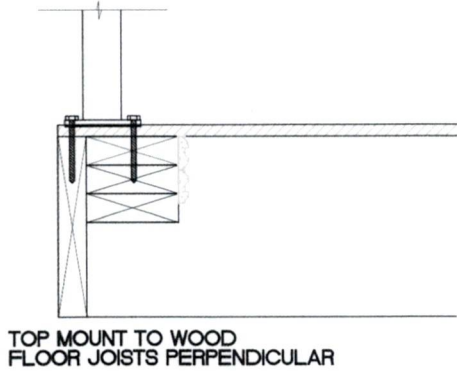
RECOMMENDED GUARDRAIL POST MOUNTING CONFIGURATIONS

RECOMMENDED MOUNTING THROUGH COMPOSITE DECKING

**RECOMMENDED ALUMINUM SPACER FOR USE WHEN MOUNTING TO HOLLOW COMPOSITE DECKING.

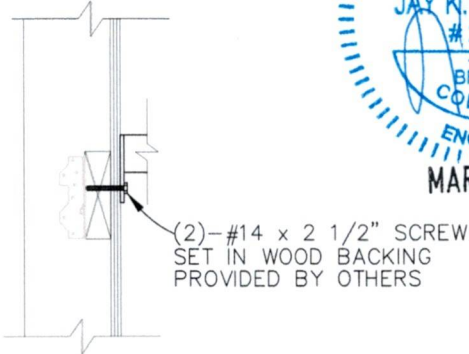


RECOMMENDED WOOD BLOCKING DETAILS

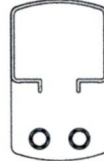


NO.1/NO.2 OR BETTER DOUGLAS FIR OR SPRUCE-PINE-FIR WOOD BLOCKING ANCHORAGE TO MAIN STRUCTURE AND MAIN STRUCTURE LOAD CAPACITY RESPONSIBILITY OF OTHERS

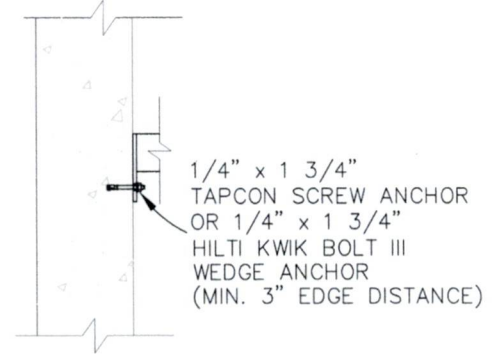
RECOMMENDED GUARDRAIL MOUNTING CONFIGURATIONS



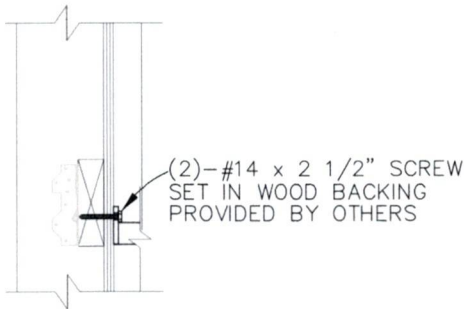
**TOP RAIL
MOUNT TO WOOD**



**TOP RAIL
END CLIP**



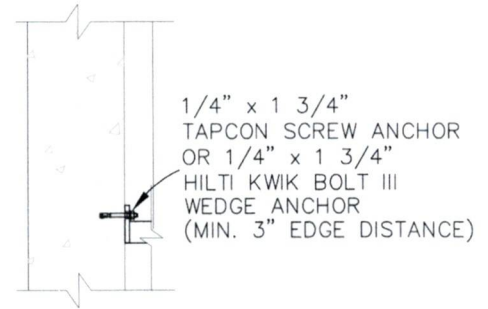
**TOP RAIL
MOUNT TO CONCRETE**



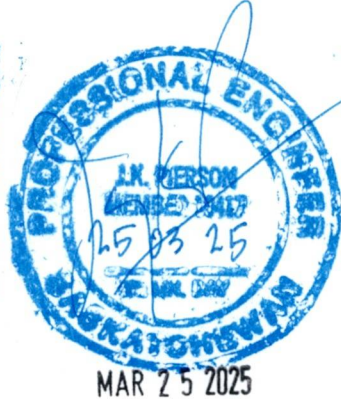
**BOTTOM RAIL
MOUNT TO WOOD**



**BOTTOM RAIL
END CLIP**



**BOTTOM RAIL
MOUNT TO CONCRETE**



NO.1/NO.2 OR BETTER WOOD DOUGLAS FIR OR SPRUCE-PINE-FIR
WOOD BLOCKING ANCHORAGE TO MAIN STRUCTURE
AND MAIN STRUCTURE LOAD CAPACITY RESPONSIBILITY OF OTHERS

RECOMMENDED GUARDRAIL TOP RAIL AND BOTTOM RAIL MOUNTING CONFIGURATIONS