

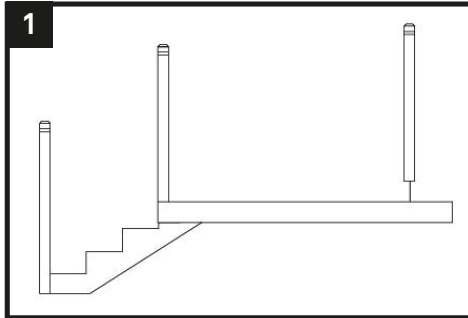


vista

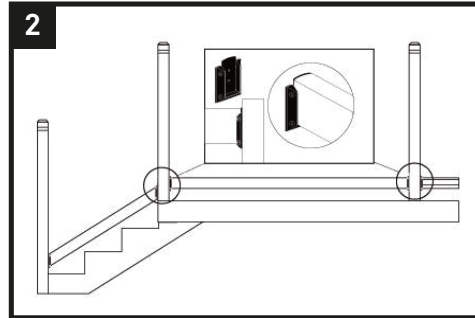
style &
simplicity

Somerset Railing Kit System

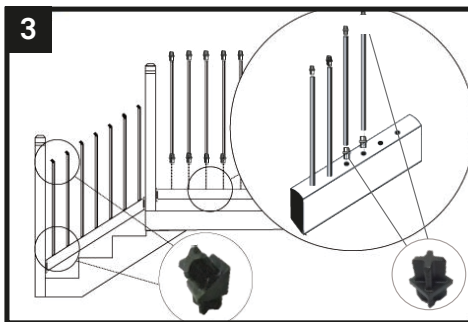
Somerset Railing Kit System



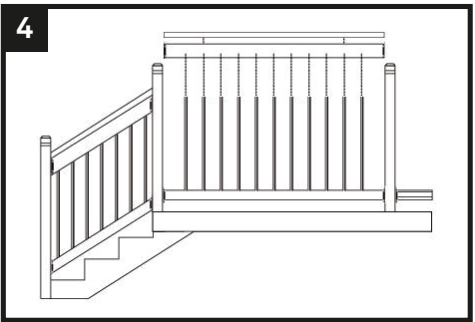
1 Set newel posts (sold separately) to accommodate pre-drilled rail length. Center pre-drilled rail between newel posts and trim equal amounts from each end of top and bottom rails.



2 Slide Rail Hanger Bracket over the end of the rail and attach with screws through end of rail. (Hint: Opening of bracket must always be up)



3 With a high-quality polyurethane construction adhesive, fill all the holes half way. Insert balusters with adapters into pre-drilled holes in rail. This will bond the wood to the balusters.



4 Attach pre-drilled top rail, fasten railing section to post with hanger bracket, attach cap rail with high-quality construction adhesive.

EVERYTHING YOU NEED BETWEEN THE POSTS!

- ✔ 2 precision factory pre-drilled rails
- ✔ 1 cap rail
- ✔ Powder-coated balusters (square/straight)
- ✔ Level Kit includes 30 baluster adapters
- ✔ Stair Kit includes 30 angled baluster adapters
- ✔ 2 pairs of rail hanger brackets with fasteners

LEVEL



6FT kit 42" 3 rail Brown Treated – SRBTR6B32M
6FT kit 42" 3 rail Premium Western Red Cedar – SRWRC6B32M

STAIR



6FT Stair kit 36" 3 rail Brown Treated – SSBTR6B26M
6FT Stair kit 36" 3 rail Premium Western Red Cedar – SSWRC6B26M

ACCESSORY



RAIL HANGER BRACKET
Pack of 2 with fasteners
HW9509600W



Note: Contact your local building department prior to installation. Level & Stair kits available in Premium Western Red Cedar and Brown Treated. Posts also available for purchase in Premium Western Red Cedar or Brown Treated options (posts not included in kit). Available in 42" railing height only.