

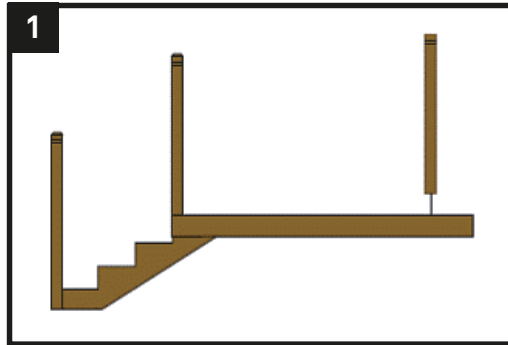


vista

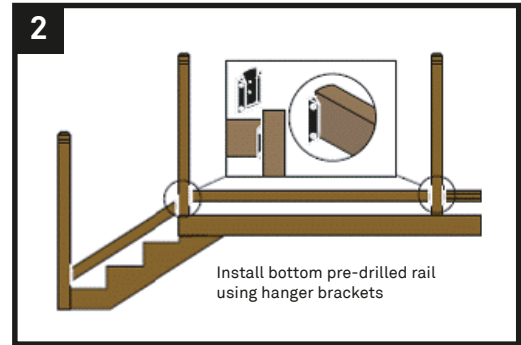
style &
simplicity

Tuscany Railing System

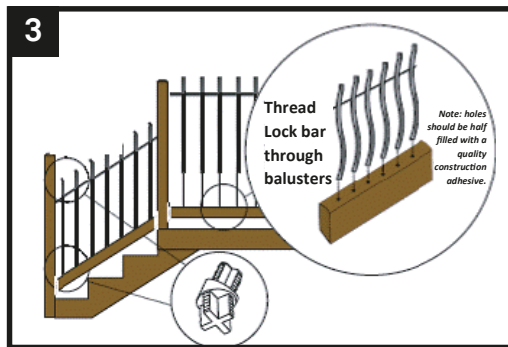
Tuscany Railing System



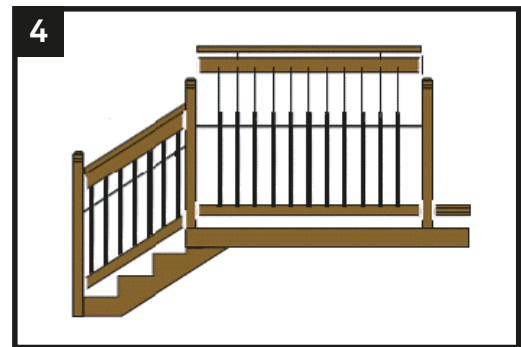
1 Install newel posts (Sold separately)



2 Install bottom rails



3 Install balusters



4 Install pre-drilled top rail

EVERYTHING YOU NEED BETWEEN THE POSTS!

- ✔ 2 profiled & precision factory pre-drilled rails
- ✔ 1 profiled cap rail
- ✔ Powder-coated balusters (Round/curved Level or Stair)
- ✔ Lock bar
- ✔ 2 pair of rail hanger brackets with fasteners
- ✔ Stair kit includes angle adapters (36-degree stair angle)



6FT kit 32" 3 rail Brown Treated – TRBTR6B32M
6FT kit 32" 3 rail Premium Western Red Cedar – TRWRC6B32M



6FT Stair kit (36°) 27" 3 rail Brown Treated – TSBTR6B27M
6FT Stair kit (36°) 27" 3 rail Premium Western Red Cedar – TSWRC6B27M



8FT kit 32" 3 rail Brown Treated – TRBTR8B32M



RAIL HANGER BRACKET
Pack of 2 with fasteners
HW9509600W

Note: Contact your local building department prior to installation. Level and stair kits available in Premium Western Red Cedar and Brown treated options. 36-degree exterior stair angle available. Best to convert 36° kit for stair application. Posts available for purchase in Premium Western Red Cedar and Brown treated species (posts not included in kits). Available in 42" railing height only.