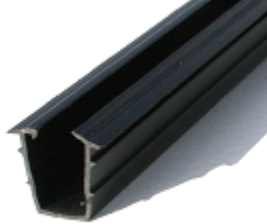




**Bottom Channel  
Gasket**



**Upper Channel  
Gasket**



### Steps for Installation:

1. Remove clear picket gasket from top & bottom rail channel
2. Install top & bottom glass gasket into the rail channel
  - a. Cut to the required length to cover the entire length of channel  
*Note: you can use 2 pieces and “butt” join for 1 section*
3. Using the fasteners that were included with the posts, fasten the bottom aluminum channel to the post
4. Install glass by inserting top of glass in the top channel first, then lower into place

### Tips to install glass, if it is seemly too tight:

- a. Spray a small amount of Glass Cleaner to lubricate; alternatively you can also try soap and water, glass cleaner is easier to clean up.
- b. Only if the above does not work, use a small/sparingly amount of silicone spray – watch out this will make everything very slippery